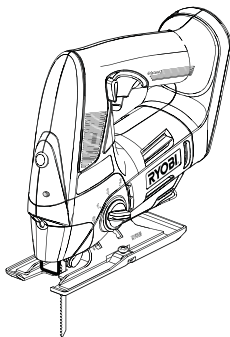


RYOBI®

CJS-180L

GB CORDLESS JIGSAW WITH LASER	USER'S MANUAL	1
FR SCIE SAUTEUSE SANS FIL AVEC GUIDE LASER	MANUEL D'UTILISATION	6
DE AKKU-STICHSÄGE MIT LASER	BEDIENUNGSANLEITUNG	11
ES SIERRA DE CALAR INALÁMBRICA CON GUÍA LÁSER	MANUAL DE UTILIZACIÓN	17
IT SEGHEGNETTO ALTERNATIVO A BATTERIA CON GUIDA LASER	MANUALE D'USO	22
NL ACCU-DECOUPEERZAAG MET LASERGELEIDER	GEbruikersHANDLEIDING	27
PT SERRA DE RECORTE SEM FIO COM GUIA LASER	MANUAL DE UTILIZAÇÃO	32
DK BATTERIDREVEN STIKSAV MED LASERSTYR	BRUGERVEJLEDNING	37
SE SLADDLÖS STICKSÅG MED LASER	INSTRUKTIONSBOK	42
FI JOHDOTON KUVIOSAHA JA LASEROHJAIN	KÄYTTÄJÄN KÄSIKIRJA	47
NO OPPLADBAR STIKKSAG MED LASERMARKØR	BRUKSANVISNING	52
RU ЛОБЗИКОВАЯ АККУМУЛЯТОРНАЯ ПИЛА С ЛАЗЕРНЫМ МЕТЧИКОМ	РУКОВОДСТВО ПО ЭКСПЛУАТАЦИИ	57
PL AKUMULATOROWA WYRZYNIARKA Z LASEROWYM PROWADNIKIEM	INSTRUKCJA OBSŁUGI	62
CZ AKUMULÁTOROVÁ LISTOVÁ PÍLA S LASEROVÝM ZAMĚROVAČEM	NÁVOD K OBSLUZE	67
HU SZÚRÓFÚRÉS Z, VEZETÉK NÉLKÜLI, LÉZERES VÁGÁSVÉZETŐVEL	HASZNÁLATI ÚTMUTATÓ	72
RO FERĂSTRĂU DE CONTUR FĂRĂ FIR CU GHID LASER	MANUAL DE UTILIZARE	77
LV BEZVADU FINIERZĀĢIS AR LĀZERU	LIETOTĀJA ROKASGRĀMATA	82
LT BEVIELIS SIAURAPJŪKLIS SU LAZERIU	NAUDOJIMO VADOVAS	87
EE LASERIGA AKU-TIKKSAAG	KASUTAJAJUHEND	92
HR BEŽIČNA UBODNA PÍLA S LASERSKOM VODILICOM	KORISNIČKI PRIRUČNIK	97
SI BREŽIČNA VBODNA ŽAGA Z LASERSKIM VODILOM	UPORABNIŠKI PRIROČNIK	102
SK BEZDRÔTOVÁ LISTOVÁ PÍLA S LASEROM	NÁVOD NA POUŽITIE	107
GR ΣΕΓΓΑ ΜΠΑΡΙΑΣ ΜΕ ΟΔΗΓΟ ΛΕΙΖΕΡ	ΟΔΗΓΙΕΣ ΧΡΗΣΗΣ	112
TR LAZER REHBERLİ KABLOSUZ DARBELİ TESTERE	KULLANIM KILAVUZU	118

GB ORIGINAL INSTRUCTIONS FR TRADUCTION DES INSTRUCTIONS ORIGINALES DE ÜBERSETZUNG DER ORIGINALANLEITUNG ES TRADUCCIÓN DE LAS INSTRUCCIONES ORIGINALES IT TRADUZIONE DELLE ISTRUZIONI ORIGINALI NL VERTALING VAN DE ORIGINELE INSTRUCTIES PT TRADUÇÃO DAS INSTRUÇÕES ORIGINAIS DK OVERSÆTTELSE AF DE ORIGINALE INSTRUKTIONER SE ÖVERSÄTTNING AV DE URSPRUNGLIGA INSTRUKTIONERNA FI ALKUPERÄISTEN OHJEIDEN SUOMENNOIS NO OVERSETTELSE AV DE ORIGINALE INSTRUKSJONENE RU ПЕРЕВОД ОРИГИНАЛЬНЫХ ИНСТРУКЦИЙ PL TŁUMACZENIE INSTRUKCJI ORYGINALNEJ CZ PŘEKŁAD ORIGINÁLNÍCH POKYNŮ HU AZ EREDETI ÚTMUTATÓ FORDÍTÁSA RO TRADUCEREA INSTRUCȚIUNILOR ORIGINALE LV TULKOTS NO ORIGINĀLĀS INSTRUKCIJAS LT ORIGINALIŲ INSTRUKCIJŲ VERTIMAS EE ORIGINAALJUHENDI TÖLGE HR PRIJEVOD ORIGINALNIH UPUTA SI PREVOD ORIGINALNIH NAVODIL SK PREKLAD POKYNOV V ORIGINALI GR ΜΕΤΑΦΡΑΣΗ ΤΩΝ ΠΡΩΤΟΤΥΠΩΝ ΟΔΗΓΙΩΝ TR ORIJNAL TALIMATLARIN TERCÜMESİ



CE

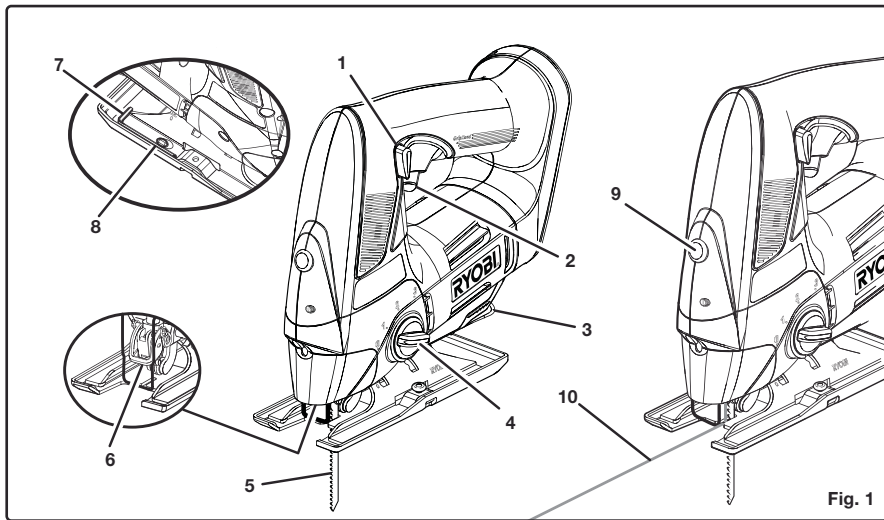


Fig. 1

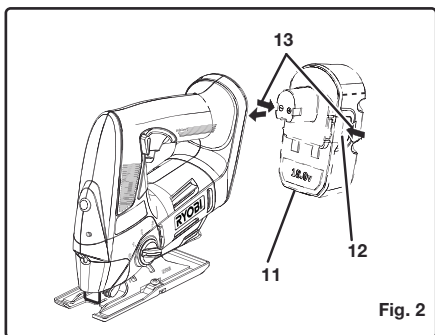


Fig. 2

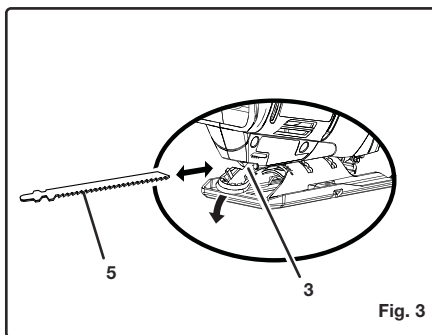


Fig. 3

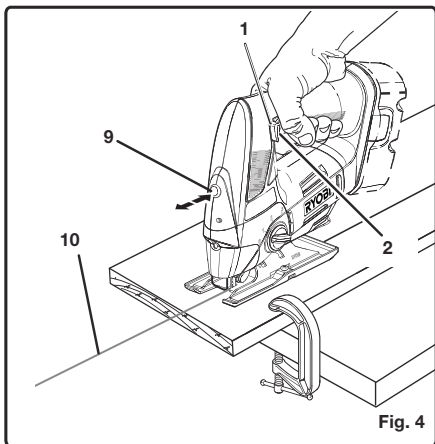


Fig. 4

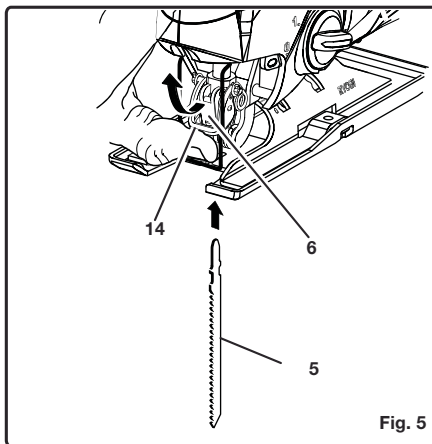
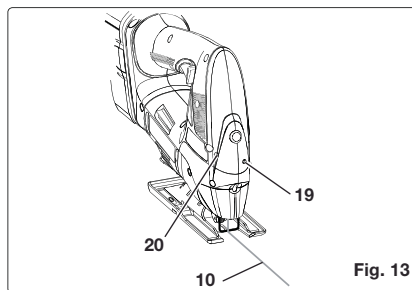
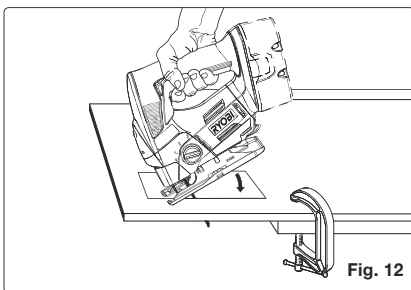
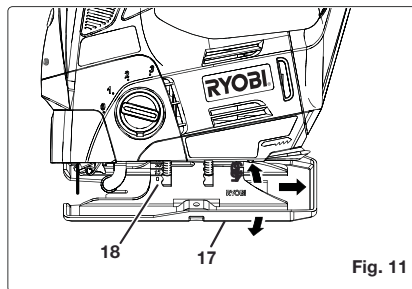
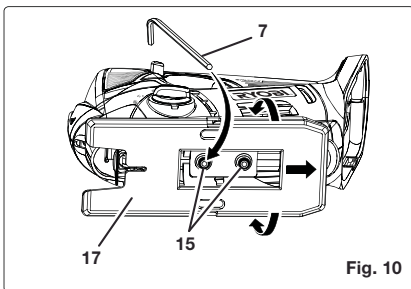
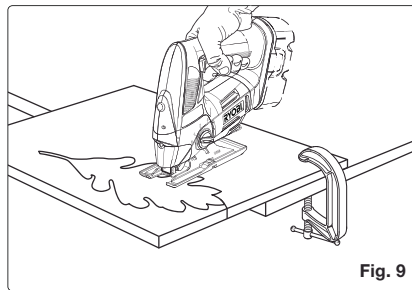
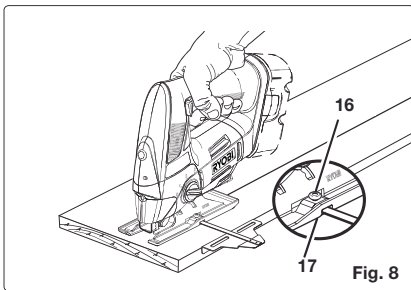
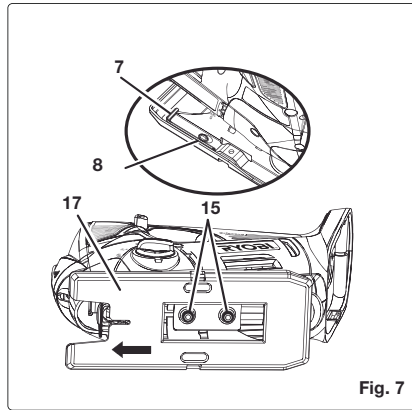
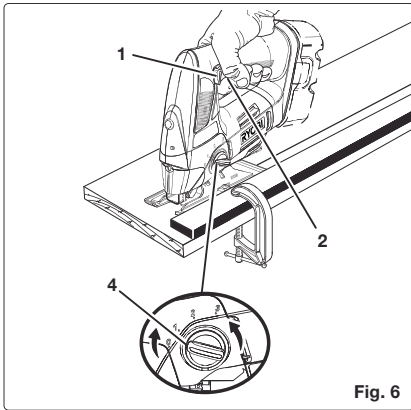


Fig. 5



Important!	It is essential that you read the instructions in this manual before operating this machine.
Attention !	Il est indispensable que vous lisiez les instructions contenues dans ce manuel avant la mise en service de l'appareil.
Achtung!	Bitte lesen Sie unbedingt vor Inbetriebnahme die Hinweise dieser Bedienungsanleitung.
¡Atención!	Es imprescindible que lea las instrucciones de este manual antes de la puesta en servicio.
Attenzione!	Prima di procedere alla messa in funzione, è indispensabile leggere attentamente le istruzioni contenute nel manuale.
Let op !	Het is van essentieel belang dat u de instructies in deze gebruiksaanwijzing leest vooraleer u dit toestel in gebruik neemt.
Atenção!	É indispensável que leia as instruções deste manual antes de utilizar a máquina.
OBS!	Denne brugsanvisning skal læses igennem inden ibrugtagning.
Observera!	Det är nödvändigt att läsa instruktionerna i denna bruksanvisning innan användning.
Huomio!	On ehdottoman välttämätöntä lukea tässä käyttöohjeessa annetut ohjeet ennen käyttöönottoa.
Advarsel!	Det er meget vigtigt at du leser denne brukeveiledningen før du tar maskinen i bruk.
Внимание!	Перед сборкой и запуском инструмента необходимо прочесть инструкции из настоящего руководства.
Uwaga!	Przed przystąpieniem do użytkowania tego urządzenia, należy koniecznie zapoznać się z zaleceniami zawartymi w niniejszym podręczniku.
Důležitě upozornění!	Nepoužívejte tento přístroj dříve, než si přečtete pokyny uvedené v tomto návodu.
Figyelem!	Feltétlenül fontos, hogy a jelen használati útmutatóban foglalt előírásokat az üzembe helyezés előtt elolvassa!
Atenție!	Este esențial să citiți instrucțiunile din acest manual înainte de operarea acestui aparat.
Uzmanību!	Svarīgi, lai jūs pirms mašīnas darbināšanas izlasītu instrukcijas šajā rokasgrāmatā.
Dèmesio!	Prieš pradėdami eksploatuoti šį prietaisą, svarbu, kad perskaitytumėte šiose instrukcijose pateiktus nurodymus.
Tähtis!	Enne trelli kasutamata hakkamist tuleb käesolevas juhendis esitatud juhised kindlasti läbi lugeda.
Upozorenje!	Neophodno je da pročitate ove upute prije uporabe ovog uređaja.
Pomembno!	Pred uporabo tega stroja, obvezno preberite navodila iz tega priročnika.
Dôležité!	Pre prácou s týmto zariadením je dôležité, by ste si prečítali pokyny v tomto návode.
Προσοχή!	Είναι απαραίτητο να διαβάσετε τις συστάσεις των οδηγιών αυτών πριν και τη θέση σε λειτουργία.
Dikkat!	Cihazın çalıştırılmasından önce bu kılavuzda bulunan talimatları okumanız zorunludur.

Subject to technical modifications / Sous réserve de modifications techniques / Technische Änderungen vorbehalten /
 Bajo reserva de modificaciones técnicas / Con riserva di eventuali modifiche tecniche / Technische wijzigingen voorbehouden /
 Com reserva de modificações técnicas / Med forbehold for tekniske ændringer / Med förbehåll för tekniska ändringar /
 Tekniset muutokset varataan / Med forbehold om tekniske ændringer / Могут быть внесены технические изменения /
 Z zastrzeżeniem modyfikacji technicznych / Změny technických údajů vyhrazeny / A műszaki módosítás jogát fenntartjuk /
 Sub rezerva modificațiilor tehnice / Paturam tiesības mainīt tehniskos raksturlielumus / Pasilieikant teisę daryti techninius pakeitimus /
 Tehnilised muudatused võimalikud / Podložno tehničkim promjenama / Tehnične spremembe dopuščene /
 Technické zmeny vyhrazené / Υπό την επιφύλαξη τεχνικών τροποποιήσεων / Teknik değişikliği hakkı saklıdır




English

SPECIFIC SAFETY RULES

- **Hold power tool by insulated gripping surfaces, when performing an operation where the fastener may contact hidden wiring.** Fasteners contacting a "live" wire may make exposed metal parts of the power tool "live" and could give the operator an electric shock.


SAFETY RULES FOR LASER GUIDE

The laser guide radiation used in saw is Class 2M with maximum <5mW and 650nm wavelengths. These lasers do not normally present an optical hazard, although staring at the beam may cause flash blindness.

WARNING:
 DO NOT stare directly at the laser beam. A hazard may exist if you deliberately stare into the beam, please observe all safety rules as follows;

- The laser shall be used and maintained in accordance with the manufacturer's instructions.
- Never aim the beam at any person or an object other than the work piece.
- The laser beam shall not be deliberately aimed at personnel and shall be prevented from being directed towards the eye of a person for longer than 0.25s.
- Always ensure the laser beam is aimed at a sturdy work piece without reflective surfaces. i.e. wood or rough coated surfaces are acceptable. Bright shiny reflective sheet steel or the like is not suitable for laser use as the reflective surface could direct the beam back at the operator.
- Do not change the laser guide assembly with a different type. Repair must only be carried out by the laser manufacturer or an authorised agent.
- Save these instructions. Refer to them frequently and use them to instruct others who may use this tool. If you loan someone this tool, loan them these instructions also.



CAUTION:
 Use of controls or adjustments or performance of procedures other than those specified herein may result in hazardous radiation exposure.

SPECIFICATIONS

Motor	18V ---
Switch	Variable Speed
No Load Speed	0-2,100 min ⁻¹
Cutting Angle	0° to 45°(Right)
Maximum Cutting Thickness(Wood)	40 mm
Blade Stroke	19 mm
Shank capacity	6.35 mm
Orbital Motion	4 Settings
Laser Guide	Class 2M,5mW max, 650nm

MODEL	BATTERY PACK (not included)	CHARGER (not included)
CJS-180L	BPP-1815 BPP-1815M BPP-1817 BPP-1817M BPL-1820 BPL-1815	BCL-1800 BCS618 BCL1418
	BPP-1815 BPP-1815M BPP-1817 BPP-1817M	BC-1815S BC-1800

DESCRIPTIONS

1. Lock-off button
2. Switch trigger
3. Blade storage
4. Orbital adjustment knob
5. T-shank saw blade
6. Toolless blade clamp
7. Hex key
8. Hex key storage area
9. Laser guide switch
10. Laser guide
11. Battery pack(not included)
12. Latches
13. Depress latches to release Battery pack
14. Blade clamp lock
15. Base pivot screw
16. Edge guide screw
17. Base
18. Scale
19. Moves the laser beam in a rotational direction
20. Moves the laser beam laterally left to right

English

OPERATION


WARNING:

Do not allow familiarity with tools to make you careless. Remember that a careless fraction of a second is sufficient to inflict serious injury.


WARNING:

Always wear safety goggles or safety glasses with side shields when operating tools. Failure to do so could result in objects being thrown into your eyes, resulting in possible serious injury.


WARNING:

Do not use any attachments or accessories not recommended by the manufacturer of this tool. The use of attachments or accessories not recommended can result in serious personal injury.

APPLICATIONS

You may use this tool for the purposes listed below:

- Cutting wood surfaces
- Cutting thin sheet metal
- Cutting plastics and laminates

TO INSERT BATTERY PACK(NOT INCLUDED) Fig.2

- Lock the switch trigger by releasing it all the way.
- Place the battery pack on the tool.
- Make sure the latches on each side of the battery pack snap into place and the battery pack is secured on the tool before beginning operation.


CAUTION:

When placing battery pack in the tool, be sure raised rib on battery pack aligns with the grooves in the saw and latches into place properly. Improper installation of the battery pack can cause damage to internal components.

TO REMOVE BATTERY PACK(NOT INCLUDED) Fig.2

- Lock the switch trigger by releasing it all the way.
- Depress the latches on the side of battery pack.
- Remove the battery pack from the tool.

BATTERY PROTECTION FEATURES

Ryobi 18 V lithium-ion batteries are designed with

features that protect the lithium-ion cells and maximize battery life. Under some operating conditions, these built-in features may cause the battery and the tool it is powering to act differently from nickel-cadmium batteries.

During some applications, the battery electronics may signal the battery to shut down, and cause the tool to stop running. To reset the battery and tool, release the trigger and resume normal operation.

NOTE: To prevent further shut down of the battery, avoid forcing the tool.

If releasing the trigger does not reset the battery and tool, the battery pack is depleted. If depleted, the battery pack will begin charging when placed on the lithium-ion charger.

BLADE STORAGE(Fig.3)

The blade storage compartment is located on the back of the saw. It is convenient for storing extra blades and storing blades when not in use.

- To open: Push the door down with your thumb or finger. Place blades in blade storage compartment.
- To close: Push the door up with your thumb or finger.


WARNING:

Battery tools are always in operating condition. Therefore, switch should always be locked when not in use or carrying at your side.

LASER GUIDE(Fig.4)

Depress the laser guide switch to generate a red laser beam on the work surface in front of the saw. Use the laser to guide the saw along the line of cut.

LOCK-OFF BUTTON(Fig.4)

The lock-off button is located on the handle above the switch trigger. You must depress the lock-off button in order to pull the switch trigger. The lock resets each time the trigger is released.

NOTE: You can depress the lock-off button from either the left or right side.

SWITCH TRIGGER(Fig.4)

To turn the saw **ON**, depress and hold lock-off button, then depress the switch trigger. To turn it **OFF**, release the switch trigger.

OPERATION**WARNING:**

This tool is designed to work with T-shank blades. Use with non-T-shank blades may result in blades coming loose from tool, resulting in personal injury or property damage.

BLADE SELECTION

To obtain the best performance from the saw, it is important to select a specific blade for the particular application and type of material you wish to cut. By doing this you will get a smoother, faster cut and prolong blade life.

NOTE: This tool is designed to work with T-shank blades. Other types of saw blades are not guaranteed to work properly and may come loose from the tool.

INSTALLING BLADES(Fig.5)

- Remove battery pack.
- Lift blade clamp lock located on front of saw.
- Insert saw blade between blade clamp and saw bar.
- Close blade clamp lock.
- Replace battery pack.

GENERAL CUTTING(Fig.6)

Rest the front of the saw base on the workpiece and align cutting edge of the blade with the line on your workpiece. Start the saw and move it forward on the work surface. Apply downward pressure to keep the saw steady and only enough forward pressure to keep the blade cutting. Do not force the saw. Forcing the saw may overheat the motor and break saw blades. Broken saw blades must be replaced with new saw blades.

ORBITAL MOTION(Fig.6)

The blade of the saw cuts in orbital motion. This feature is adjustable and provides faster, more efficient cutting. With orbital motion, the blade cuts through your work in the upstroke but does not drag across your work in the downstroke. The higher settings should be used when fast cutting in soft material is desired. The lower settings should be used when cutting materials with more resistance.

STRAIGHT CUTTING(Fig.6)

A straight cut can be made by clamping a piece of wood or straightedge to the workpiece and guiding the edge of the saw against it. Make the cut from one direction only;

don't cut halfway and complete the cut from the opposite end.

SPLINTER-FREE CUTTING(Fig.7)

The base of the jig saw has a narrow slot to permit splinter-free cutting. It is especially useful when cutting plywood. This feature should only be used when making straight cuts or circle cuts. It is not for bevel cutting or plunge cutting.

NOTE: The non-orbital setting also helps reduce splintering when cutting plywood.

positioning the base in the splinter-free cutting position

- Remove battery pack
- Using the 3 mm. hex key provided, loosen base pivot screws and slide base forward.
- Always set the cutting angle at 0° for splinter-free cutting. To set cutting angle at 0°, align the 0° mark on the scale with the edge of the motor housing.

NOTE: When setting angle at 0° for splinter-free cutting, the positive stop notches on the rear of the base are not used.

- Tighten base pivot screws securely.
- Remove hex key and return it to the storage area.
- Replace battery pack.

OPTIONAL EDGE GUIDE(Fig.8)

An optional edge guide is available for use with the saw. It can be used for making crosscuts and rip cuts.

- Remove battery pack.
- Insert the arm through the two slots in the base of the saw as shown.
- Adjust edge guide to the desired width and lock in place with the edge guide screw.
- Replace battery pack.

SCROLL CUTTING(Fig.9)

Scroll cuts can be made with the jig saw by guiding the direction of the cut with applied pressure on the handle as shown.

**WARNING:**

Excessive side pressure to the blade could result in broken blades or damage to the material being cut.

English

OPERATION

ANGLE CUTTING (Bevel Cutting) (Fig.10-Fig.11)

Bevel cutting angles may be adjusted from 0° to 45° right or left. Angles for cuts from 0° to 45° in 15° increments are marked on a scale on both the left and right side of the base. Notches on the rear of the base provide positive stops at each of the above mentioned 15° increments. A protractor is recommended when accurate cuts are required.

- Remove battery pack.
- Using the 3 mm. hex key provided, loosen the base pivot screws until the base can be moved.
- Slide base backward until base pivot screws can move freely in slots in base.
- Align the mark, on the base, of the desired angle with the edge of the motor housing.
- Once the desired angle is reached, slide base forward until tab on motor housing aligns with the appropriate notch on rear of base.

NOTE: When making a set-up for accurate cuts with a protractor, or for angles other than the preset 15° increments, the positive stop notches on the rear of the base are not used.

- Tighten the base pivot screws securely.
- Return hex key to storage compartment.
- Replace battery pack.

NOTE: The wide slot in the base must be used when making bevel cuts, scroll cuts, plunge cuts, and when cutting metal.

PLUNGE CUTTING(Fig.12)



WARNING:
To avoid loss of control, broken blades, or damage to the material being cut, always use extreme caution when making plunge cuts. We do not recommend plunge cutting on materials other than wood.

- Mark the line of cut clearly on the workpiece.
- Set the cutting angle at 0°.
- Tilt the saw forward so that it rests on the front edge of the base and blade will not come in contact with the workpiece when the saw is turned on.
- Make sure the blade is inside the area to be cut.
- Using high speed, start the saw and slowly lower the blade into the workpiece until the blade cuts through the wood.

- Continue lowering the blade into the workpiece until the base rests flat on the work surface, then move the saw forward to complete the opening.



WARNING:
Use of controls or adjustments or performance of procedures other than those specified herein could result in hazardous radiation exposure.

ADJUSTING THE LASER(Fig.13)

The laser can be realigned by adjusting the two screws located in the front of the saw. The top screw moves the laser beam laterally from left to right. The bottom screw moves the laser beam in a rotational direction.

NOTE: Draw a pencil line on scrap workpiece parallel to the long edge of the base as a straight line guide to aid in the adjusting process.

- Remove the blade from the saw.
- Turn laser on.
- Rest base of saw on scrap workpiece.
- Adjust screws as necessary.
- Since blade thicknesses vary, always make a trial cut in scrap workpiece to ensure an accurate cut.
- Check for proper alignment.
- Repeat as necessary until laser is aligned.

MAINTENANCE



WARNING:
When servicing, use only identical replacement parts. Use of any other parts may create a hazard or cause product damage.



WARNING:
Always wear safety goggles or safety glasses with side shields during power tool operation or when blowing dust. If operation is dusty, also wear a dust mask.



WARNING:
To avoid serious personal injury, always remove the battery pack from the tool when cleaning or performing any maintenance.

GENERAL MAINTENANCE

Avoid using solvents when cleaning plastic parts. Most plastics are susceptible to damage from various types of commercial solvents and may be damaged by their use. Use clean cloths to remove dirt, dust, oil, grease, etc.


English

MAINTENANCE







⚠ WARNING:
Do not at any time let brake fluids, gasoline, petroleum-based products, penetrating oils, etc., come in contact with plastic parts. Chemicals can damage, weaken or destroy plastic which may result in serious personal injury.

Only the parts shown on the parts list are intended to be repaired or replaced by the customer. All other parts should be replaced at an Authorized Service Center.

ENVIRONMENTAL PROTECTION

 Recycle raw materials instead of disposing as waste. The machine, accessories and packaging should be sorted for environmental-friendly recycling.

SYMBOL

-  Safety Alert
- V Volts
- min⁻¹ Revolutions or reciprocations per minute
-  Direct current
-  CE Conformity
-  Please read the instructions carefully before starting the machine.
-  Recycle unwanted
-  Waste electrical products should not be disposed of with household waste. Please recycle where facilities exist. Check with your Local Authority or retailer for recycling advice.